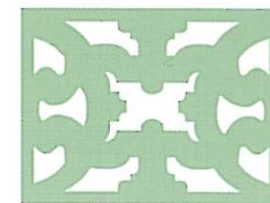
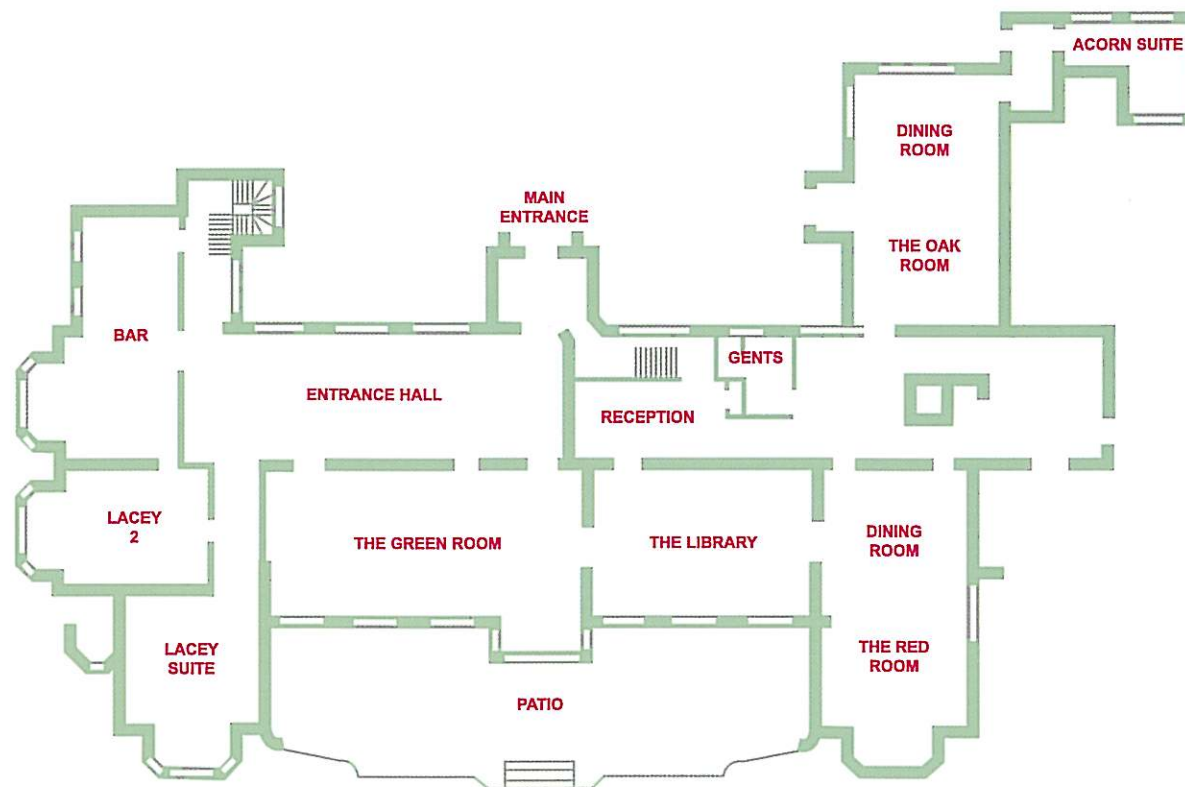


Eynsham Hall - Ground Floor

Floor Plans & Capacity



Eynsham Hall



Room	Dimensions (m)	Height (m)	Area (sq m)	Boardroom	U-shape	Theatre	Classroom	Reception/ Buffet	Lunch/ Dinner	Dinner dance
Green Room	15.2 x 7.6	4.5	95	46	40	150	70	200	100	100
Lacey Suite	7.6 x 6.7	3.4	50	20	18	40	20	-	-	-
Lacey 2	6.7 x 5.7	3.4	38	16	12	20	-	-	-	-

Technical	Door W (m)	Floor Level	Daylight	Tungsten	Blackout	Dimmers	13 amp sockets	3 phase	Air con	Telephone points	ISDN	TV aerial	PA
Green Room	1.5	G	yes	no	yes	yes	18	-	no	1	yes	-	no
Lacey Suite	0.9	G	yes	no	yes	no	2	-	no	1	yes	-	no
Lacey 2	0.9	G	yes	no	yes	no	4	-	no	1	yes	-	no

For bookings or more information Please call 01993 885 200