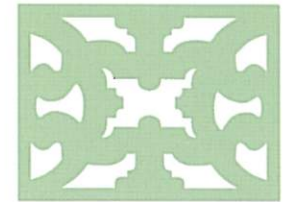
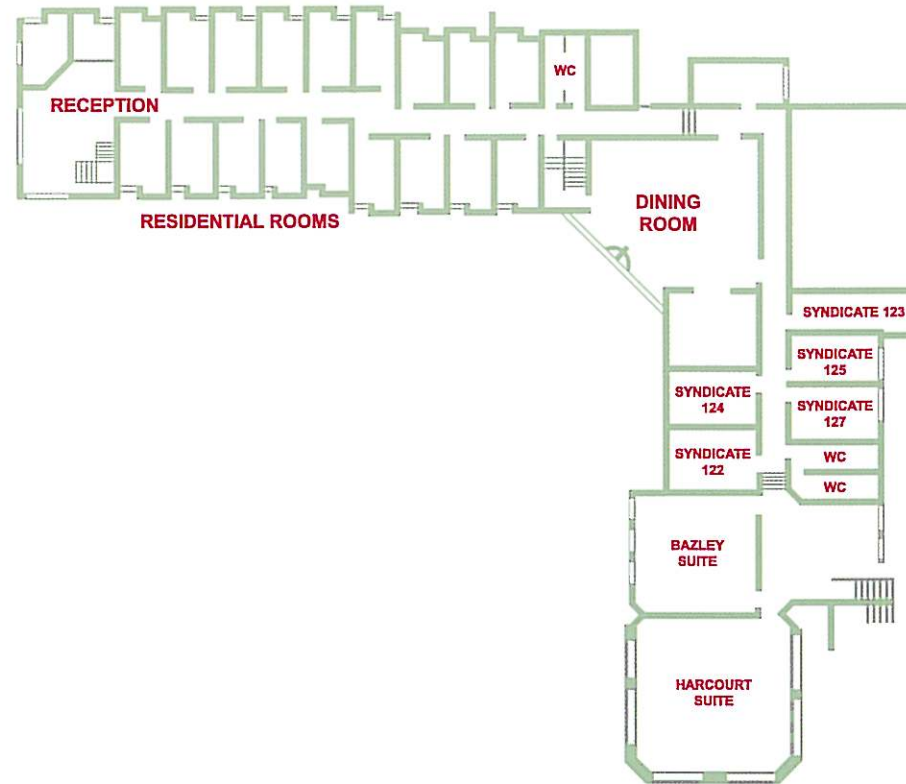


# Eynsham Court - Ground Floor

## Floor Plans & Capacity



Eynsham Hall



Room	Dimensions (m)	Height (m)	Area (sq m)	Boardroom	U-shape	Theatre	Classroom	Reception/ Buffet	Lunch/ Dinner	Dinner dance
Harcourt Suite	10.5 x 10	3.2	105	32	32	70	42	-	-	-
Bazley (open)	7.9 x 8	3.2	63.2	22	18	40	24	-	-	-
Bazley (divided)	3.9 x 8	3.2	31.2	15	-	-	-	-	-	-
Syndicate Rooms	-	-	-	10	-	-	-	-	-	-

Technical	Door W (m)	Floor Level	Daylight	Tungsten	Blackout	Dimmers	13 amp sockets	3 phase	Air con	Telephone points	TV aerial	PA
Harcourt Suite	1.3	G	yes	no	yes	no	24	-	yes	1	1	no
Bazley (open)	0.75	G	yes	no	yes	no	18	-	yes	2	-	no
Bazley (divided)	0.75	G	yes	no	yes	no	-	-	yes	1	-	no
Syndicate Rooms	0.75	G	yes	no	no	no	4	-	no	1	-	no

For bookings or more information Please call 01993 885 200